

# **Creating safer, sustainable and connected communities**

**AOA Webinar, 7 September 2021**

**Sarah Macaulay**

**A/General Manager Social Impact**

**RAC WA**



**For the better**

# About RAC

- » Purpose-led member organisation.
- » Part of the WA community for 116 years.
- » 1.2 million members (60% of households).
- » 1,800 staff.
- » Member services inc. Roadside Assistance, Insurance, Travel, Parks and Resorts, Finance, Auto Services, Batteries, Tyres, Home Services and Security.



# Purpose

The driving force  
for a better WA.

# Vision

2030: A safer, sustainable  
and connected future for  
Western Australians.

# Mission

Delivering great member services  
and experiences, while inspiring  
positive community change, that  
makes life better in WA.

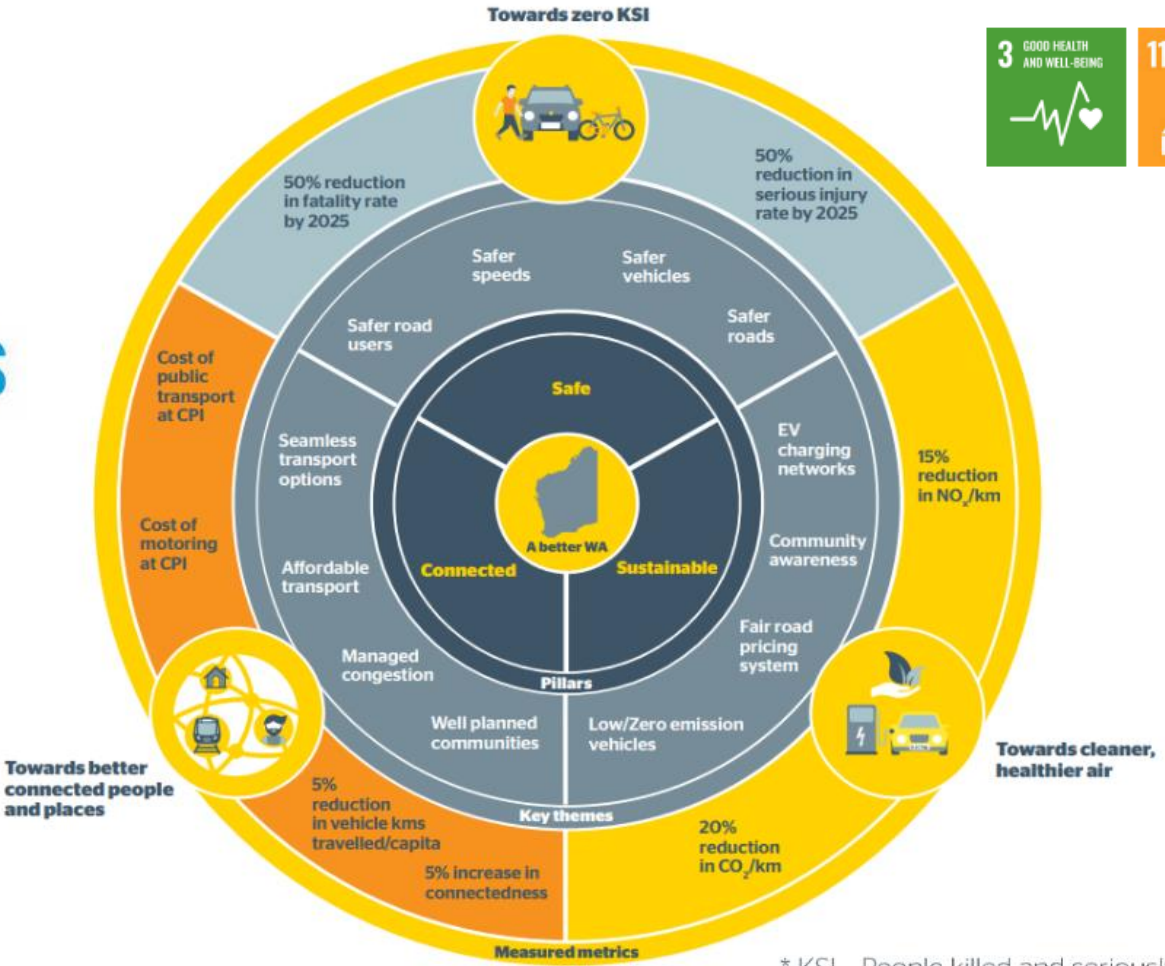


**For the better**



# Measuring our Social and Community Impact

## SUSTAINABLE DEVELOPMENT GOALS

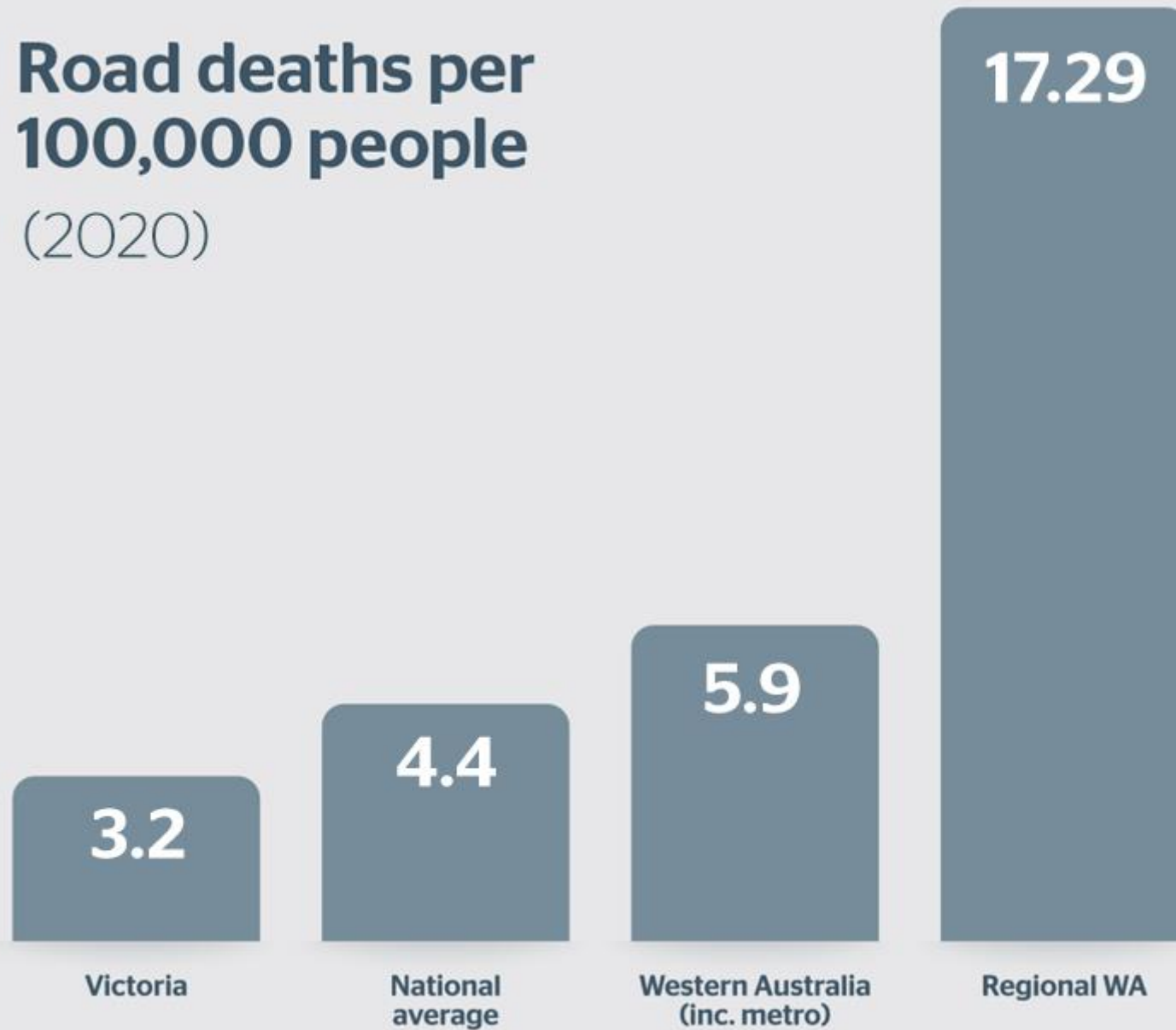


\* KSI - People killed and seriously injured

**Safe**



# Road deaths per 100,000 people (2020)







# Regional Road Safety Program



**17,000kms**

of regional roads upgraded

**60% reduction**

in regional road trauma

Prevents more than

**2,100**

crashes causing death  
and serious injury

# Metropolitan intersections



In just five years, **85 people**  
**were killed** at Perth  
intersections.

2,448 more were  
**seriously injured.**

Estimated economic cost

**\$1.42 billion**



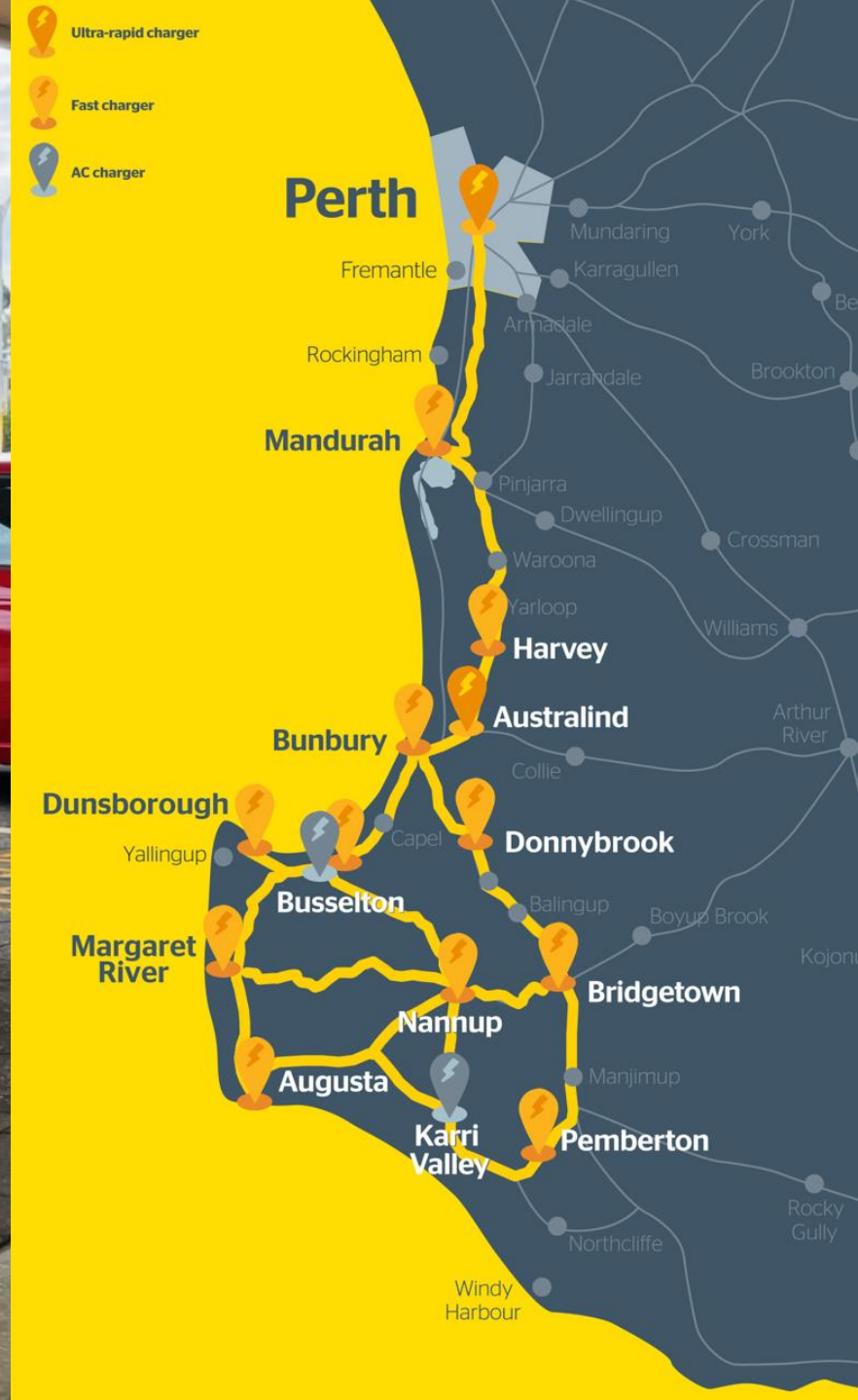
A man and a woman are riding bicycles on a red-paved path that runs along a body of water. The woman is on the left, wearing a yellow polka-dot shirt and blue jeans, and the man is on the right, wearing a white t-shirt and khaki shorts. Both are wearing helmets and smiling. The path is marked with white dashed lines. In the background, there is a city skyline with several tall buildings under a warm, golden sunset sky. A few seagulls are visible on the grassy bank near the water.

**Sustainable**

- » Per person, Australia's CO<sub>2</sub> emissions are nearly 4x the global average and 8<sup>th</sup> highest in the world for road transport.
- » Aussie cars emit 43 million tonnes of harmful emissions every year.
- » Sulfur content in our petrol can be up to 15 times more harmful than in the USA, Europe and China.
- » Electric vehicles are <1%.
- » In 2015, over 2,500 Australians deaths were attributed to air pollution.

Allowable sulfur content in petrol (ppm):







**Connected**



**Those who feel connected to their community rate their wellbeing 24% higher than those who don't.**



# Connecting Communities Fund

Creating community identity and belonging.



TOWN TEAM  
MOVEMENT



**Telstra Block Park  
(Dunsborough)**



**Subiaco Street Side  
Gallery**



**The Wandering  
Orchard (Wellard)**



**Really, Really Free  
Markets (Midland)**



**Busselton Street Art  
Project (Opal Lane)**



**Long Table for  
Sustainability (Leighton)**



**Community Mural &  
Play Space (Doubleview)**



**Activate Portside  
(Port Headland)**



**Native Bee-Scene  
Mural (West Perth)**



**Library of things  
(Victoria Park)**



**Community Parklet  
(Brentwood)**



**Outdoor Environmental  
Garden (Champion Lakes)**

# Reconnect WA

Revitalising streets and public spaces.

- » Create vibrant and active places for Western Australians to interact and reconnect.
- » Inspire and empower people and businesses to drive change in their local area.
- » Lay the foundations for longer-term changes.



Colours of Mandurah



Merredin Pop-up Piazza



# VISION 2030

safe • sustainable • connected



For the better

# Thank you



**For the better**