



ESG and Resilience in Insurance

June 2023

Noel D. Raboy

President and CEO

CLIMBS Life and General Insurance Cooperative

I Who we are



CLIMBS Life and General Insurance Cooperative, established in 1971 in Cagayan de Oro City, Founded by the late Atty. Mordino Cua and Atty. Aquilino Pimentel Sr. A leading life and non-life micro-insurance provider in the Philippines licensed by the Cooperative Development Authority (CDA) and the Insurance Commission (IC).

Our ESG Approach

Environmental



Social



Governance



Environmental



We are starting to demonstrate our strong commitment to environmental responsibility through various actions and initiatives as part of the of the ESG framework, supporting a more sustainable future.



Tree Planting Activities



Coastal Clean-up Activities

17 WPI Roadshows in 2022, Nationwide

- 394 Cooperatives Reached
- 803 Participants

First Cooperative Climate Summit

- 86 Cooperatives
- 258 Participants

Community of Practice

WPI Roundtable Discussion

Educational forum

Weather Protect Insurance Awareness Campaign



What is Weather Protect Insurance?

It is an enhanced weather protect insurance with value added benefits on smart agriculture design for cooperatives and their farmer-members.

Value Added Benefits

Based on temperature, season forecast, and data on flood risk



Crops suitable to area



Livelihood Mapping



Crop Calendar



Seasonal Agriculture

This is Our contribution to Coops 2030, addressing the Sustainable Development Goals (SDG):



Environmental



Our Global Partners

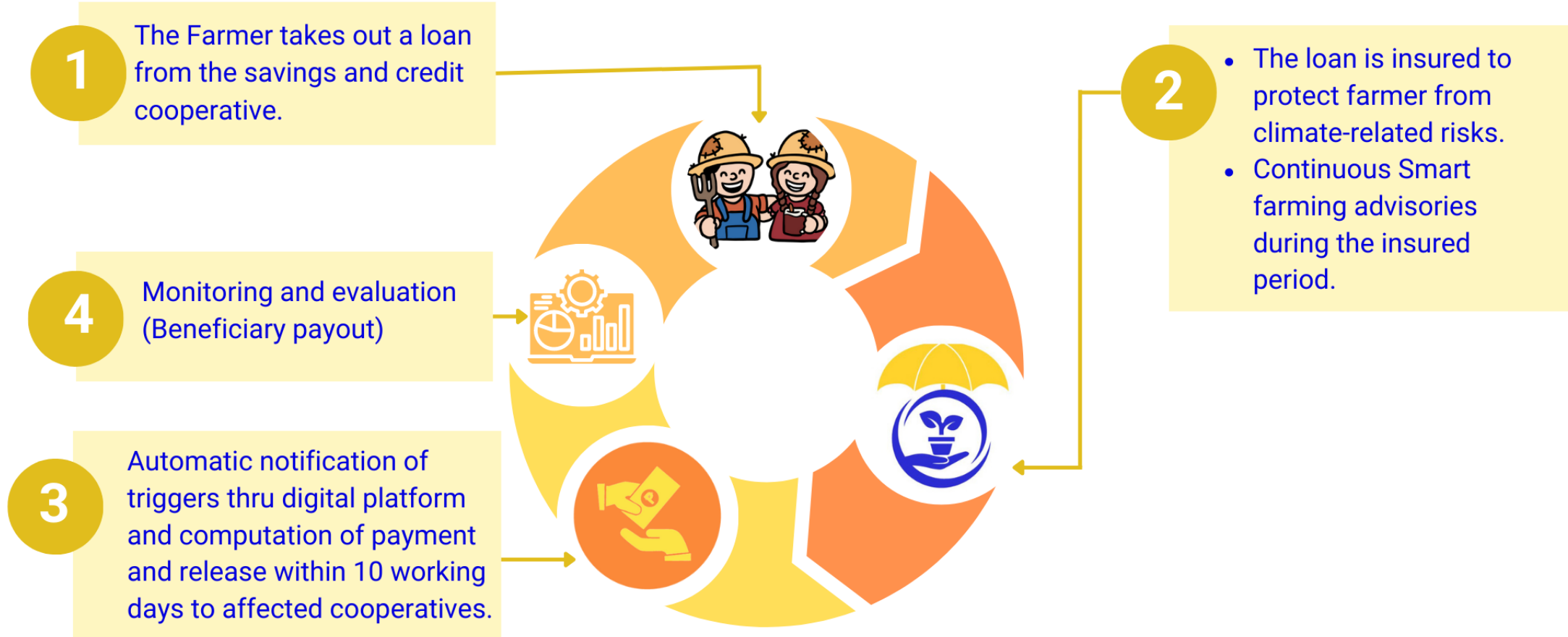


Insuring 20 Million Lives by 2024



HOLISTIC APPROACH

Steps between offering the insurance and the end-beneficiaries benefitting from insurance.





107

WEATHER PROTECT INSURANCE PARTICIPATING COOPERATIVES

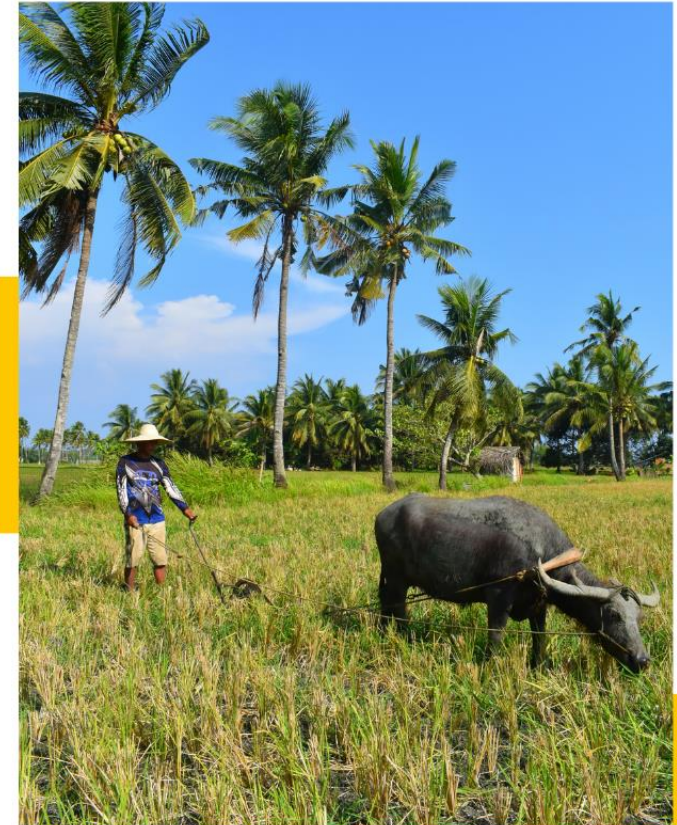


Environmental



WPI Ways Forward

- Mainstream climate smart agriculture (CSA) practices.
- Promote the proven CSA practices (crop advisories in this project), from its initial target sites to the wider agri-geography across the country ultimately at farmer level.
- Continuous lobbying for institutional support.
- Education and advocacy on Climate Action
- Ensure sustainability on product development with current and potential partners.
- All stakeholders (Government, LGUs, MFI, Finance Institutions) become partners for goals.



Social



Promoting social responsibility is part of CLIMBS' DNA as a cooperative. **Social responsibility** encompasses a range of issues, of which CLIMBS has taken specific issues in community development, equity, diversity and inclusion.



Social



Promotion of diversity and inclusion is also evident, **championing gender equality** in the workplace. This is evident within the CLIMBS' membership and leadership, as well as supporting diversity and inclusion initiatives in the wider community like the celebration of the Women's month and other related activities.



79

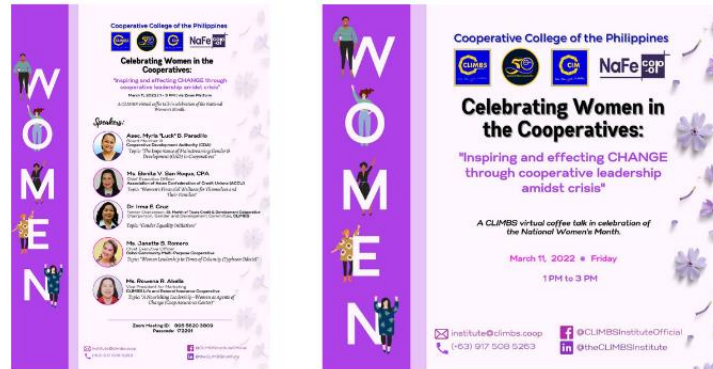
- 6 BOD
- 13 Committees
- 5 Exec. Mgmt.
- 25 Dept. Heads
- 42 Rank and File (Reg)
- 8 Rank and File (Non-reg)



142

- 5 BOD
- 5 Committees
- 5 Exec. Mgmt.
- 40 Dept. Heads
- 75 Rank and File (Reg)
- 12 Rank and File (Non-reg)

2 Gender Equality Activities



Social

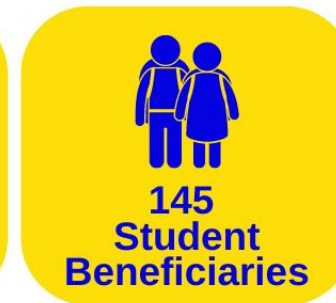


The creation of the **KoopSkwela** (mobile learning hub). Response to the needs of school-children who were affected by the pandemic emphasizes the importance of education at an early stage.

Organized by:



CO-OPERATIVE COLLEGE OF THE PHILIPPINES



in a span of six (6) months

Impacting



Social



At a higher cooperative management's needs level, the CLIMBS Institute of Management has successfully pivoted to **Co-operative College of the Philippines** with an official partnership signing with the Co-operative College of UK to **promote the cooperative education worldwide**. In the Philippines, the Co-op College Ph also **partnered with the Asian Institute of Management**.



Historic Signing of Agreement between the Co-operative College (UK), CLIMBS Life and General Insurance Cooperative, and the Co-operative College of the Philippines took place in Silken Al-Andalus Palace, Sevilla, Spain; a side-event to the “Cooperatives: the time is now!”

Social



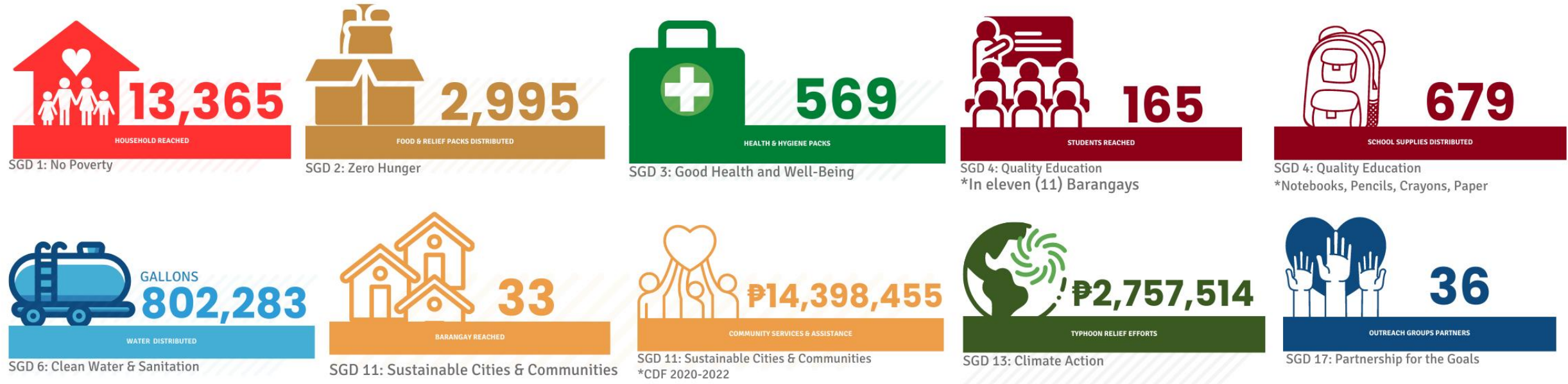
Last Jan. 30 – Feb. 5, 2023, together with 48 delegates coming from 17 co-operatives nationwide, this leadership program focused on our Co-operative Values and Principles which has been designed to explore and expand the participants' co-operative knowledge.



Social



The cooperative principles on Education, Training and Information, Concern for Community, and Cooperation among cooperatives are evident in the plans, programs and activities promoting social responsibility, diversity and inclusion, demonstrating our support to a more equitable and inclusive society.



Governance



CLIMBS endeavored to make significant contribution to promoting good governance practices. An example of commitment to good governance and support to a more effective and responsible organization by prioritizing transparency, accountability, ethical behavior, and board diversity and independence.



PEOPLE



PLANNING



PERFORMANCE



Business Innovation Planning in collaboration with Asian Institute of Management ARETE Leadership

International Project Evaluation with International Labour Organization (ILO)

Participated in the ASEAN Reinsurane Program Module: "Reinsurance Planning and Structuring for Non Life"

Actuarial training with Asian Actuaries highlighted the International Financial Reporting Standard (IFRS)

Budget hearing and strategic planning facilitated by Asian Institute of Management (AIM)



Insuring 20 Million Lives by 2024

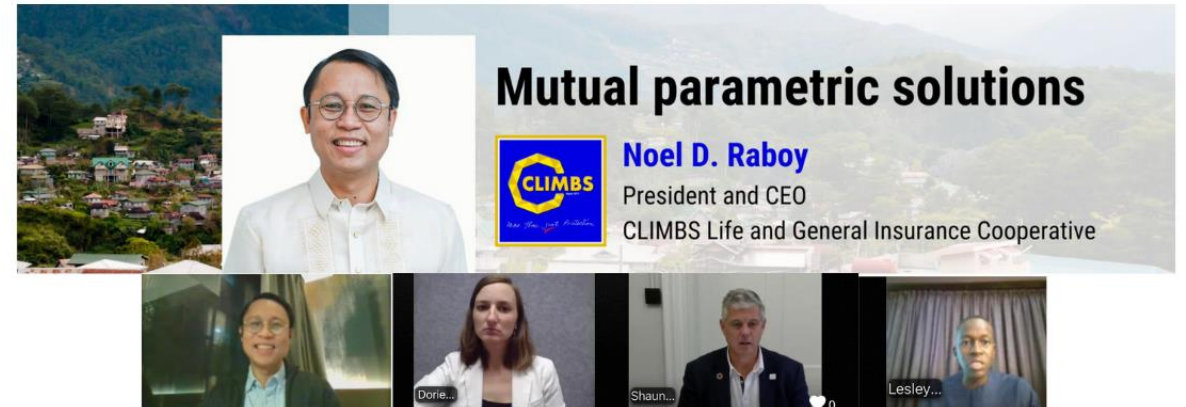
Our Climate Action Engagements



The Asia Insurance Review hosted the Asia Nat CAT and Climate Change Conference, held at the Grand Copthorne Waterfront Hotel in Singapore, with the theme: “Unmask the Possibility”.

CLIMBS President and CEO, Mr. Noel Raboy was one of the speakers, with his topic ‘Adapting to Climate Change in Developing Countries’.
September 26-27, 2022

The International Cooperative and Mutual Insurance Federation (ICMIF) Zoom webinar: "Mutual Parametric Solutions". Mr. Noel Raboy (President & CEO, CLIMBS) was joined by Lesley Ndlovu of African Risk Capacity Ltd and Dorien Asampana of IBISA.
October 5, 2022



Our Climate Action Engagements



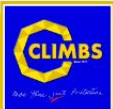
CLIMBS President and CEO, Mr. Noel Raboy joined the plenary on Inclusive Resilience through Protection and Prevention during the ICMIF Centenary Conference in Rome, Italy. He presented the parametric Weather Protect Insurance which is CLIMBS's, together with its member cooperatives, contribution to Climate Action and is aligned to the Sendai Framework for Disaster Risk Reduction 2015-2030.

October 27, 2022

The CLIMBS Top Management headed by President and CEO Noel Raboy met with the Insuresilience Solutions Fund (ISF) team in its Headquarters at the Frankfurt School of Business and Management. Important matters were discussed on the implementation of the CLIMBS-led project on agriculture and climate resilience benefiting the cooperatives, farmers, and agripreneurs in the Philippines.

The relevance of education in addressing the different challenges on sustainability was also highlighted with a future collaboration with the Co-operative College of the Philippines.

November 9, 2022



Our Climate Action Engagements



CLIMBS was among the panelists to the round table discussion on Responsible Business Conduct in the Food Value Chains in the Philippines sponsored by the Philippines Partnership for Sustainable Agriculture (PPSA) and AGREA Foundation with the Ambassador of the Netherlands as Keynote Speaker. CLIMBS was represented by Vice President for Marketing, Ms. Rowena R. Abella together with CAC Field Officer for Luzon, Ms. IV Delos Reyes. November 15, 2022

CLIMBS Top Management visited the International Labour Organization (ILO) headquarters in General, Switzerland.





Thank you

CLIMBS Life and General Insurance Cooperative
CLIMBS Building, Zone 5, Bulua, Cagayan de Oro City, Philippines

Follow us on our social media accounts



Scan