



IPB Insurance

Working to make a difference

ICMIF Resilience and Sustainability Summit

4 November 2025

Laura Smith, Head of Sustainability



Who are IPB?

Established in 1926, our purpose is the same today as it was almost a century ago, namely, to protect the insurable interests of our Members, placing them at the heart of everything we do.

Only indigenous mutual insurer in Ireland.

Our sector focus:



Arts, Culture, Tourism & Heritage



Public & Government Agencies



Community & Voluntary/Not for Profit



Education



Health & Social Care



Housing/Property





100 Years

Insuring Ireland's local government educational and health sectors



Mutual

Proud to be Ireland's only mutual insurer



100%

Irish owned insurer, all decisions made locally



€1.4bn

Assets under direct internal management



100%

Member customer retention rate



52

Members

across local government, education and health



GPTW 7+ years

Best Places to Work in Ireland for medium sized companies



A- (stable)

Our rating from S&P Global



ISO 9002

Quality Management system accredited



€19 million

Over €19 million allocated in funding for local communities, education, sports & social enterprise



94%

Customer Satisfaction rating in 2024 (source: B2B Research)

Added value – risk-led Management supports

We safeguard Members and clients through a risk-led approach focused on **prevention, protection, and safeguarding**. Our expert team provides valuable resources, including risk guidance, workshops, and webinars.



CORPORATE RISK

- Governance, Risk and Compliance – Risk Registers, Governance and Compliance Assessment Tools
- Information Security (Cyber Risk) and Data Protection (GDPR Compliance)
- Business Continuity Management Systems
- Fraud Risk Prevention

ENVIRONMENTAL RISK

- Environmental Management Systems
- Chemical Risk Management
- Oil Spillages
- Climate Action, Waste Management, Air and Water Quality



OPERATIONAL RISK

School Safety Awareness

- Safety Statements and Risk Assessments
- Safe Use of Ladders by Maintenance Staff
- Slips, Trips and Falls
- Work Related Vehicle Safety
- Fire Safety in Schools

Student Safety

- Educational Trips Risk
- Student Placement Risk
- Students With Medical Conditions

TECHNICAL RISK

- Building Portfolio Management
- Electrical Safety
- Fire: Property Damage, Prevention and Life Preservation

SOCIAL RISK

- Cyber Bullying Prevention and Management
- Child Safeguarding
- Equality, Diversity and Inclusion
- Psychosocial Risk (Stress Management)
- Wellbeing
- Managing Violence and Aggression

Our Local Authority Members

Local Authorities in Ireland are leading the climate transition:

- Under the Climate Action and Low Carbon Development (Amendment) Act 2021, all 31 local authorities were mandated to develop five-year Climate Action Plans.
- These plans align with the National Climate Action Plan (51% reduction in GHG emissions by 2030 compared to 2018 levels and climate neutrality by 2050).
- 4,000 specific actions across sectors like transport, housing, energy, and emergency response

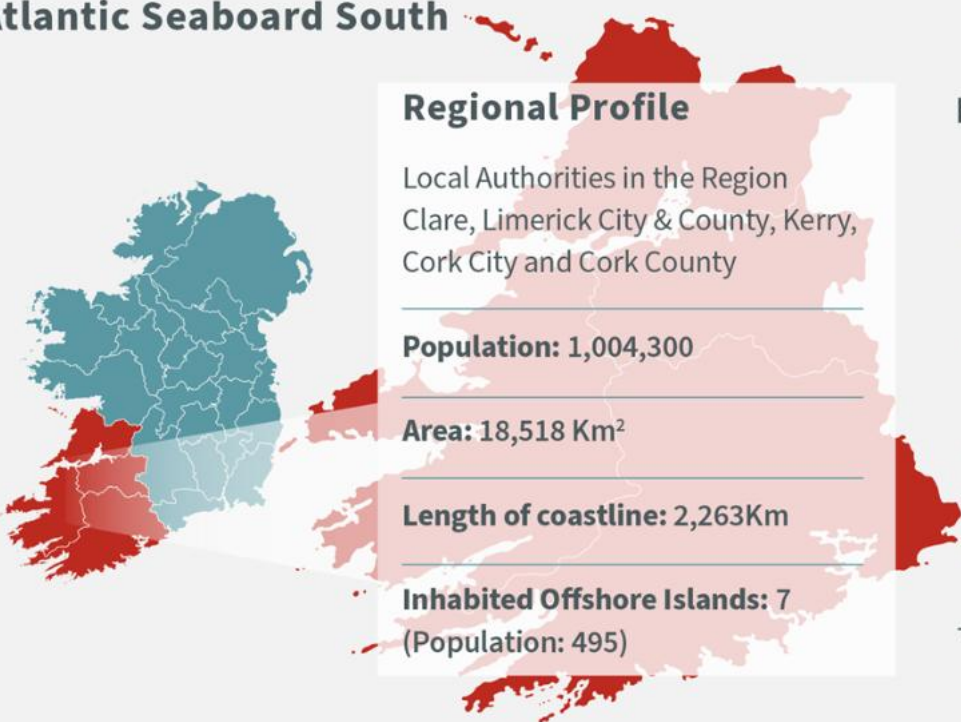


Climate Action Regional Offices (CARO)

The Four CAROs provide guidance, advice and support to the 31 Local Authorities to leverage the capability, reach and resources of the sector to effectively address climate change across Ireland:

- Atlantic Seaboard North
- Atlantic Seaboard South
- Eastern & Midlands CARO
- Dublin Metropolitan CARO

Atlantic Seaboard South



Regional Profile

Local Authorities in the Region
Clare, Limerick City & County, Kerry,
Cork City and Cork County






Population: 1,004,300

Area: 18,518 Km²

Length of coastline: 2,263Km

Inhabited Offshore Islands: 7
(Population: 495)

Knowledge Hub Development

-  **Sea Level Rise**
-  **Coastal Flooding**
-  **Storms**
-  **Groundwater Flooding**
-  **Rural Pluvial Flooding**

Examples of Local Climate Action

- Over 7,300 social homes have been retrofitted since 2022, saving enough energy to power 6,000 households annually and cutting 29,336 tonnes of CO₂.
- Local Authorities completed 181 km of cycling and pedestrian infrastructure in 2024 alone, promoting sustainable transport.
- Local authorities are replacing traditional street lighting with energy-efficient LEDs, significantly reducing energy use and maintenance costs.
- Volunteers planting marram grass and chestnut fencing at Ballyhiernan beach, part of Donegal County Council's attempts to confront coastal erosion.



Source: <https://www.breakingnews.ie/ireland/local-authorities-cutting-carbon-emissions-through-thousands-of-actions-1804791.html>

Examples of Local Climate Action

Tipperary County Council planted a “mini-forest” of 5,000+ trees to capture 65 tonnes of carbon annually.



Meath County Council’s “Eco Chic” initiative diverted 1,500 clothing items from landfill.

Source: <https://www.breakingnews.ie/ireland/local-authorities-cutting-carbon-emissions-through-thousands-of-actions-1804791.html>

Why does this matter?

As a mutual, we have always had our Members' backs.

Our Sustainability Strategy doesn't change that – it's what we do.

We will continue to support our Members, clients and their stakeholder communities during the climate transition.

IPB's Sustainability Strategy is set out based on Environmental, Social and Governance (ESG) factors that closely aligns with our ethos of mutuality.



Turning sustainability into a strategic differentiator



Our commitment to develop and embed a sustainability strategy



Our commitment to be a responsible and sustainable insurer



Our commitment to people and culture



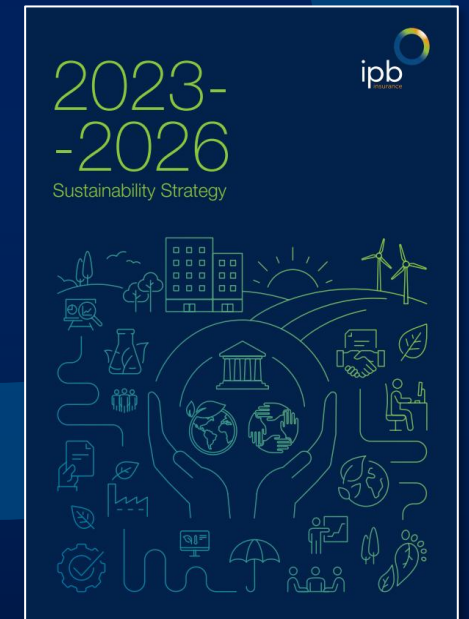
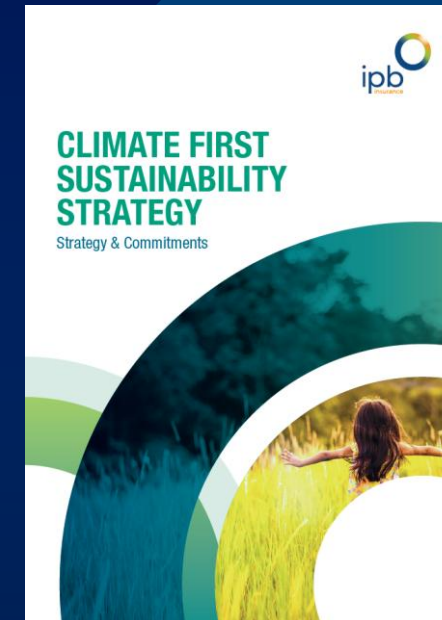
Our commitment to responsible investment



Our commitment to provide responsible operations



Our commitment to Members



Our mutuality has always been a strategic differentiator – sustainability now helps us *recognise* and *celebrate* it.

How?

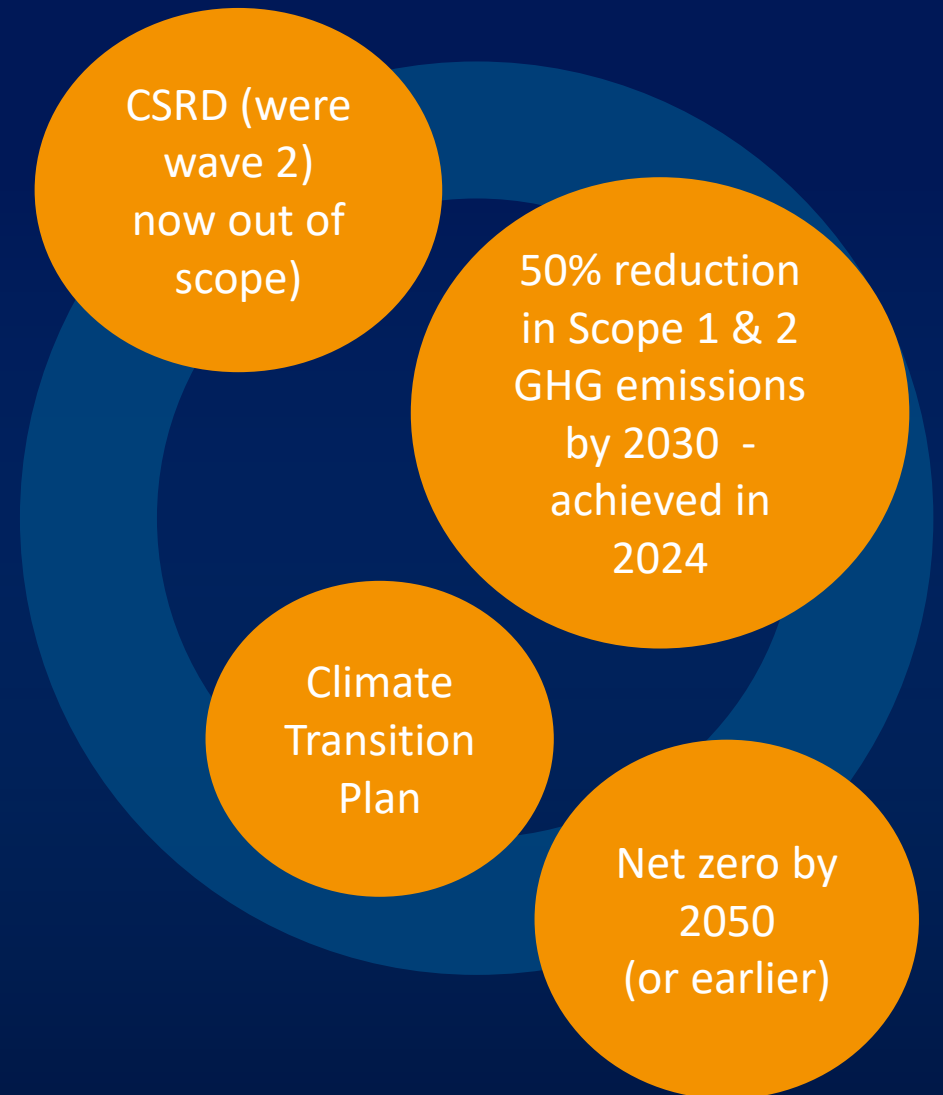
Sustainability fits the mutual model as we are owned by our members which allows us to prioritise **long-term value creation** which naturally supports sustainability goals.

Mutuality is the **foundation** of our company strategy and our sustainability strategy.

Sustainability is not a compliance exercise – it is a core strategic lever that **reinforces our mutual ethos**, drives innovation, and builds long-term resilience.

Our focus is on ‘doing’ sustainability and **having an impact**.

Sustainability has driven the development of **enhanced insurance products** that support member climate goals.



Supporting members, supporting communities

We are constantly seeking to innovate and support our members as they lead the climate transition in their local communities, some examples:

- Build back better (green re-instatement)
- EV – 10% discount
- Charging cable liability – enhancement to public liability policy
- Micro generation – enhancement to property policy loss of income due to physical damage
- TidyTowns insurance



Supporting members, supporting communities

Our Corporate Social Engagement Fund (CSE) – some examples



<https://www.prideofplace.ie/>



Thank You

For more information please contact:

Laura Smith

Head of Sustainability

Laura.smith@ipb.ie

